

# UAW Radio Programming Guide

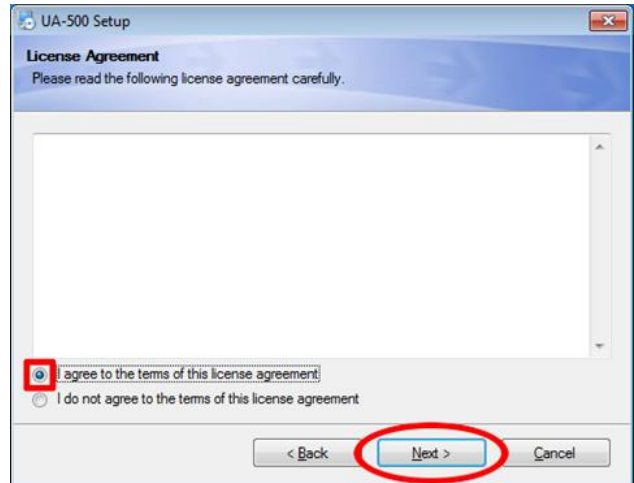
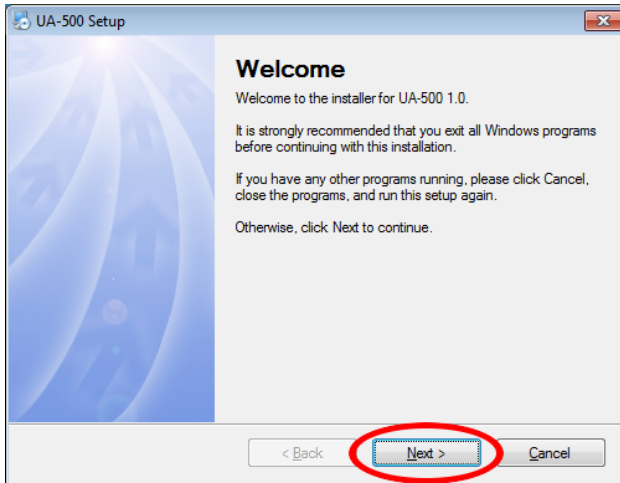
## Required Items

- UAW Brand Radio (UA500, UA501, UA550, UA551, UA400, UA401, UA300, UA301)
- Radio Programming Cable (USB or Serial)
- Computer with Windows XP/Vista/7/8

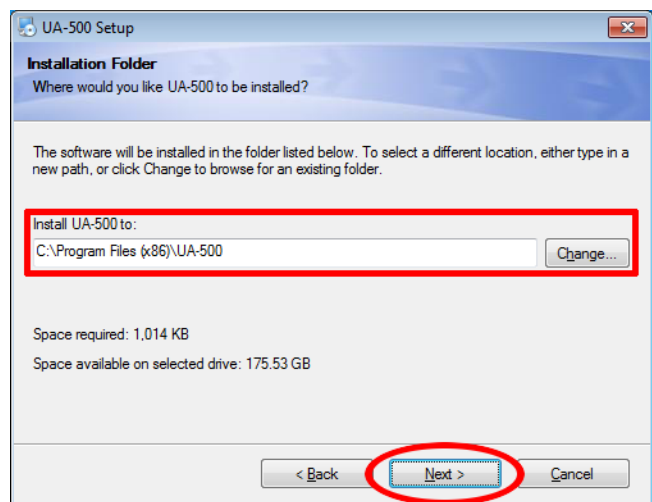
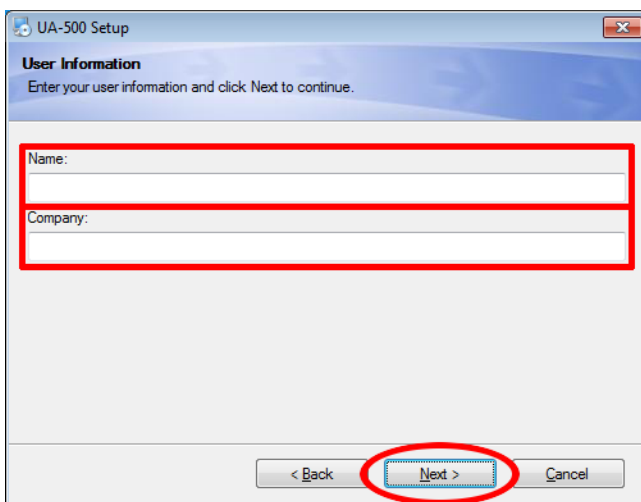
## Initial Setup

### Installing Programming Software

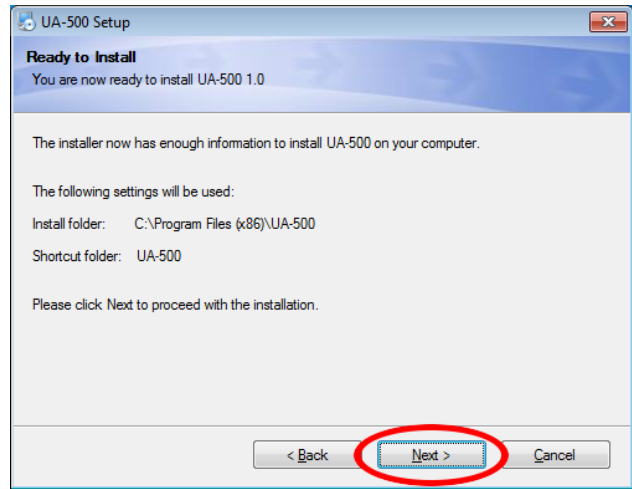
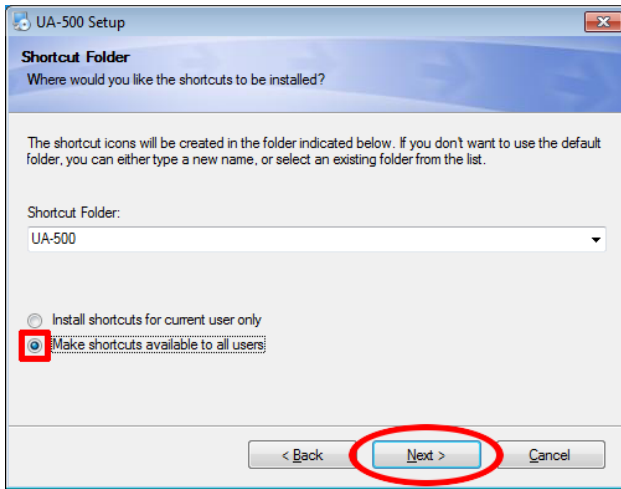
To open the installer double click on .exe installer/setup file. A **Welcome** screen should appear and you can click on **Next >** to continue. To continue you will have to agree to the **License Agreement** and then click on **Next >**.



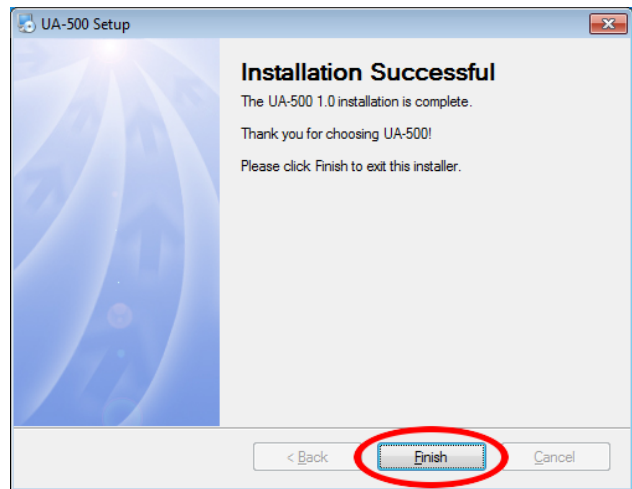
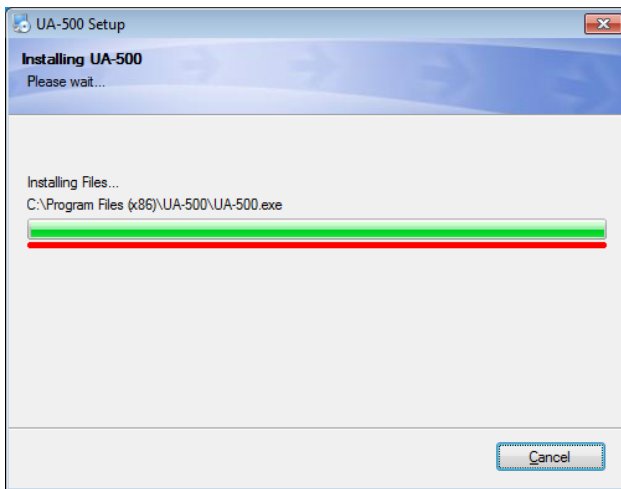
Enter your Name and Company into the appropriate boxes, and click on **Next >** to save them. Then you can choose where to install the software. If you are unsure, then leave it as is and click **Next >**.



You can choose who to make the software shortcut visible to next. If you are unsure, select **Make shortcuts available to all users** and click **Next >**. A screen will appear confirming the options you picked, and if they are correct, click **Next >** to install the files. You can click **< Back** to change anything if you made a mistake



The program will well need a moment to finish installation. Do not close the window or do anything else until the **Installation Successful** screen appears. You can click **Finish** to close the window when you are done.



## Installing Drivers (For USB Cable Only)

If you are using the USB Programming Cable, you will need to install the driver for it, so it may properly communicate between the radio and the software. The instructions for USB Driver installation are located in a separate file, and may be downloaded from the Uniform Warehouse website.

# Connecting Your Radio to Your Computer

## Connecting the Programming Cable to Your Computer (Serial)

The serial cable you received from Uniform Warehouse should look something like the picture below. The end with two round metal connectors is the end that is meant to go into your radio. The end with a larger connector with many holes in it is meant to go into your computer's serial port. A picture of what the port should look like is also below.



Plug the connector into your computer, and screw it in (if your serial port has screw holes) to make sure the connection is secure as possible. If your computer does not have a port which looks similar to the picture (it may be flipped or a different color), then you may need to use a USB programming cable instead.

## Connecting the Programming Cable to Your Computer (USB)

The USB cable you received from Uniform Warehouse should look something like the picture below. The end with two round metal connectors is the end that is meant to go into your radio. The end with a larger square connector is meant to go into your computer's serial port. A picture of what the port should look like is also below.



Plug the USB into the port and make sure it is full inserted. If your computer does not have a port which looks similar to the picture (it may be flipped or a different color), then you may need to use a serial cable instead.

### Connecting the Programming Cable to the Radio

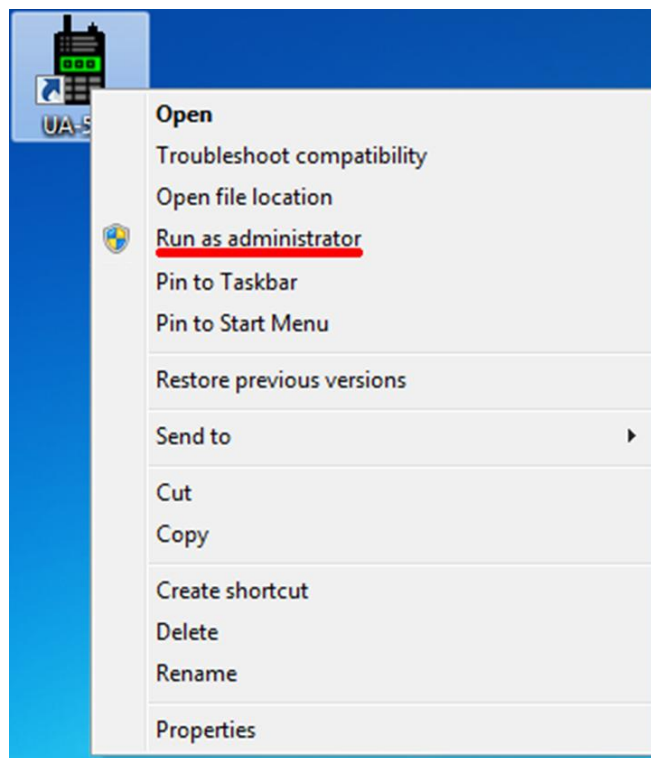
On the right side (assuming the speaker/mic is facing you) of the radio, there should be 2 holes. These should be the same ports used to connect your external speaker or microphone (if you use one). If the ports are not visible, you may need to unscrew a single screw from the side, to allow you to take off a cover, revealing the ports. Some models may simply have a flap you need to pull open.



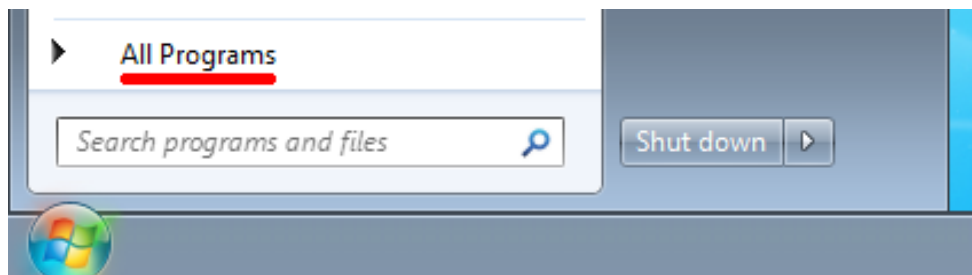
# Using the Radio Programming Software

## Starting the Software

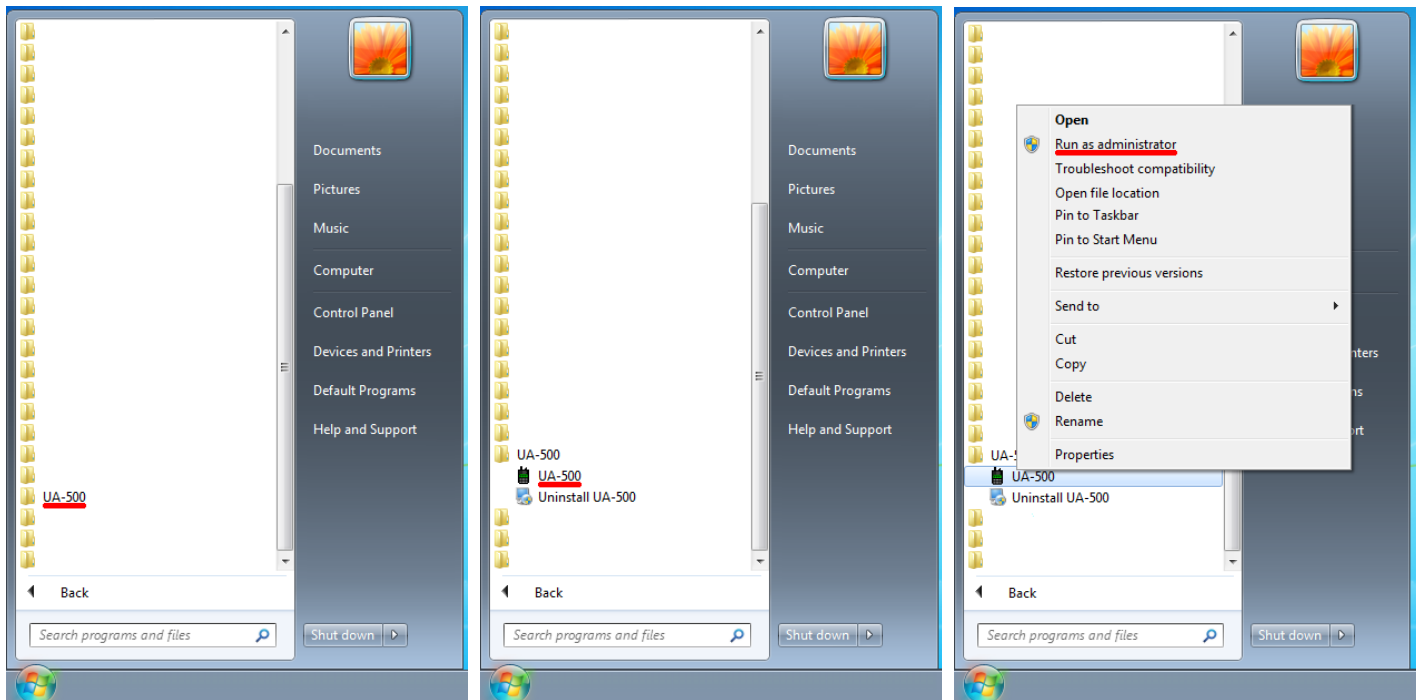
When starting the software, you must run the application as an administrator or it will not function properly. To do this you can find the icon on your desktop labeled **UA-500** and right click on it, making a menu appear. Click on **Run as administrator**, and if a pop up will ask if you are sure you want to run the program, click **Yes**.



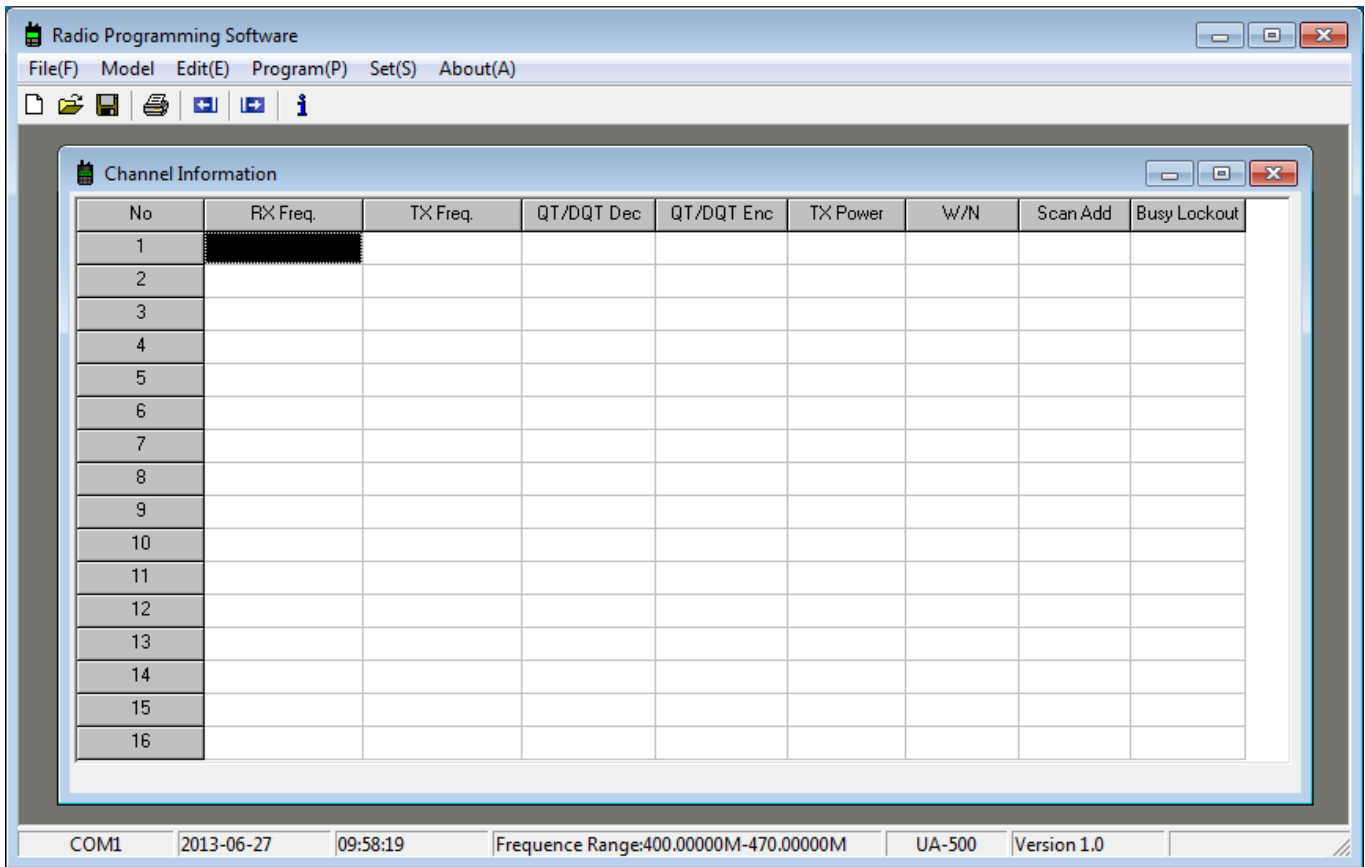
If you cannot find the icon on the desktop, you can try to find it in your **All Programs** menu. Click on your start button at the bottom left of your screen. Then click on **All Programs**, and a list of files and folders should appear.



Find the folder labeled **UA-500**, and open it. You will see another **UA-500**, with a radio icon, inside the folder. Right click on it, click **Run as administrator**, and if a pop up will ask if you are sure you want to run the program, click **Yes**.

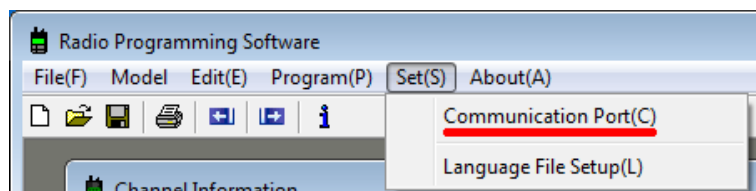


The radio programming software should start, and by default a blank table will be open.

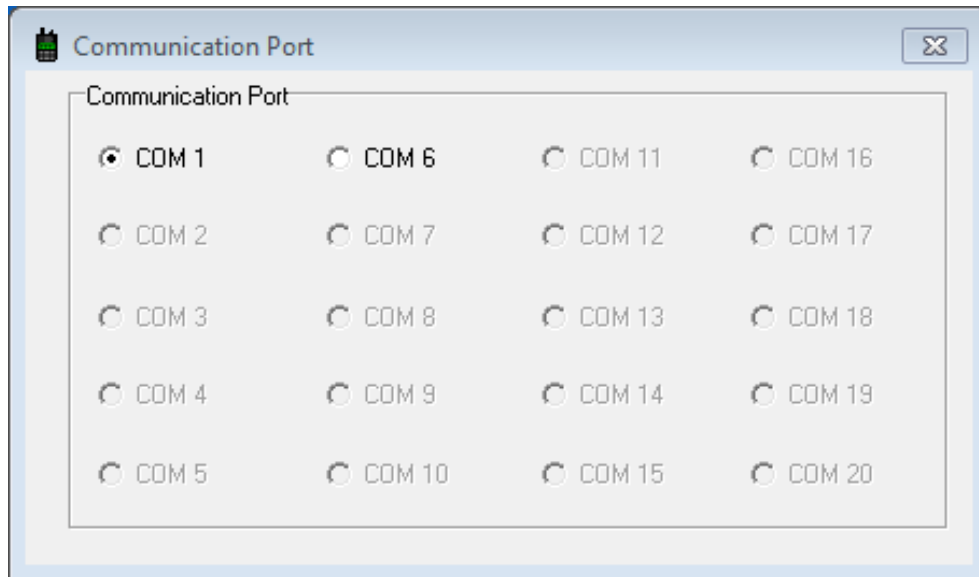


## Setting Your COM Port

For the software to work properly with your radio, you must select the correct COM port that your radio is connected to. To view and change the currently selected COM port you can click on Set(S) in the menu bar and then click on Communication Port(C).

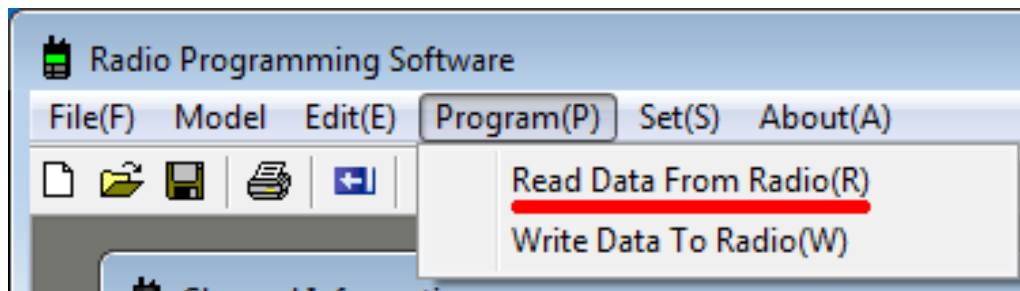


The Communication Port window should appear and you currently selected COM port should have a black dot next to it. Available COM ports will be in black and unavailable COM ports will be in grey. If the COM port you are currently using does not work, try to switch it to another available port. If all COM ports are grey, then you did not start the program as an administrator and will need to do so.

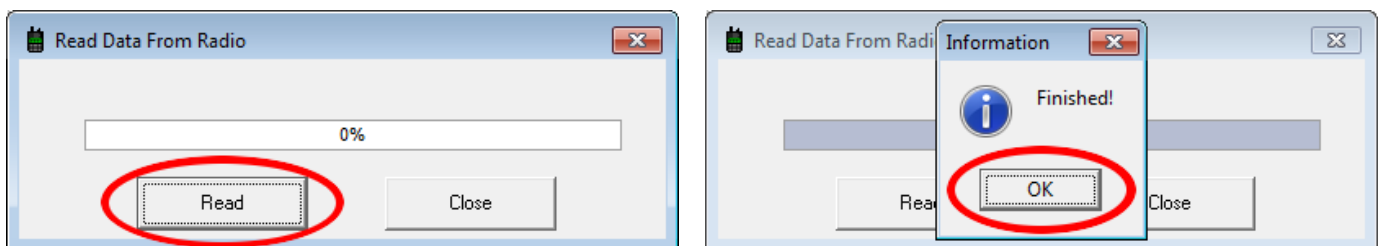


## Reading Data from the Radio

To view the current programming of your radio you will have to read the data on the radio. You will also need to do this if you want to change only parts of the radio programming and not all of it. Make sure your radio is turned on, your radio is connected, and your COM port is set correctly. Then click on **Program(P)** and then **Read Data From Radio(R)**.

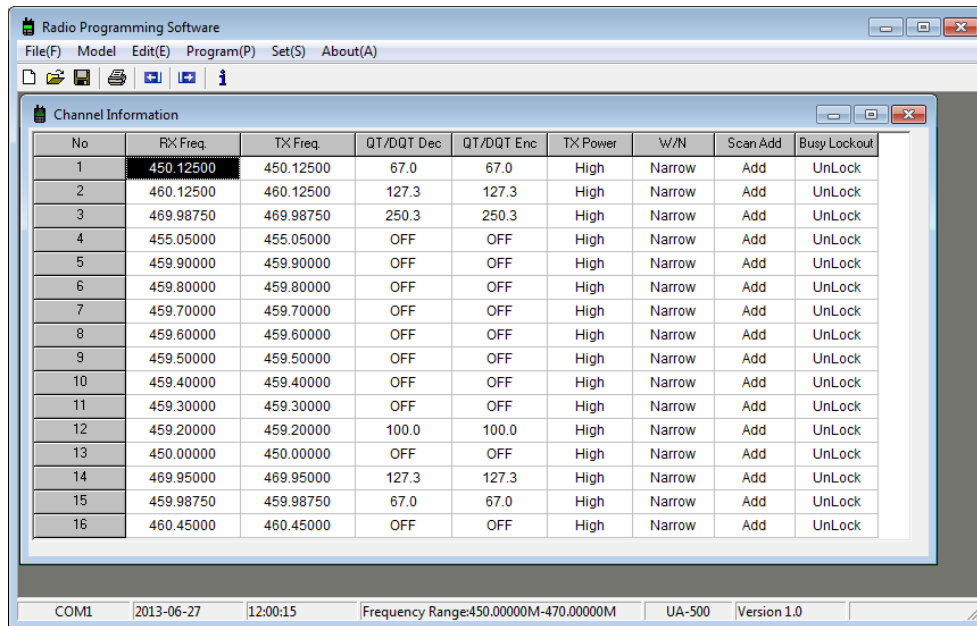


Click on **Read** and the loading bar should start moving. If it does not, make sure it is properly plugged in (and your COM port settings are correct) Do not unplug the radio, or close the window, while it is reading. Once it is done you can click on OK to close the window.

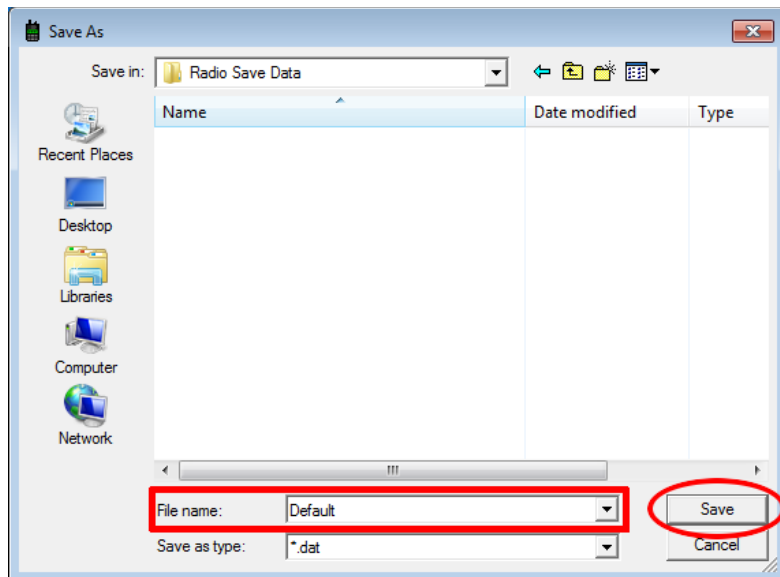
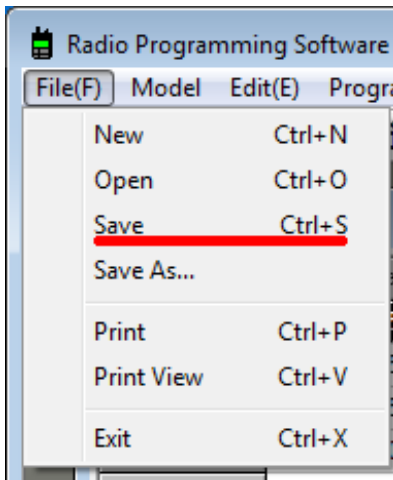


The table that you saw when you first opened the program should now be filled with the channel settings that are current set on your radio.



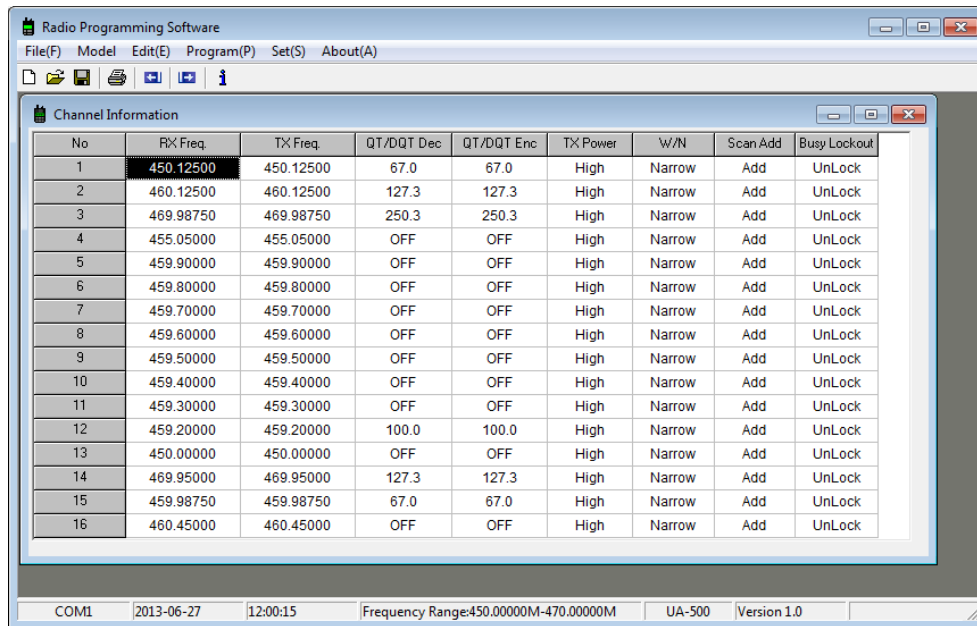


**Important:** If this is your first time programming a Uniform Warehouse radio, it is recommended that you make a backup of the default programming. Click on **File(F)** and then **Save As...** Select a location to save the file that you will remember and name it **Default** to make it easier to identify.



## Changing Channel Settings

To get your Uniform Warehouse brand radio's to work with other brand radios, use repeaters, or to change power, band, and busy settings, you will have to modify the values in the **Channel Information** window. This window should be open when the program starts by default, but if you accidentally closed it, you can open it again by click **Edit(E)** in menu bar and then **Channel Info(C)**.



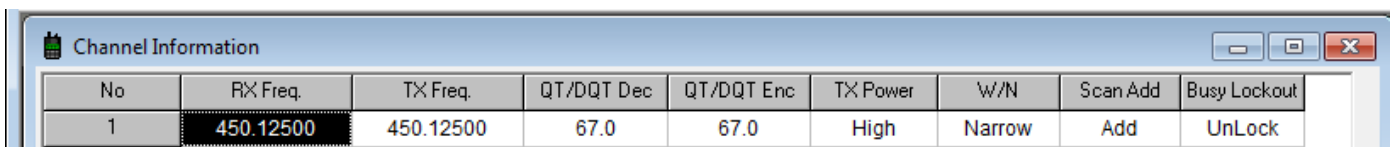
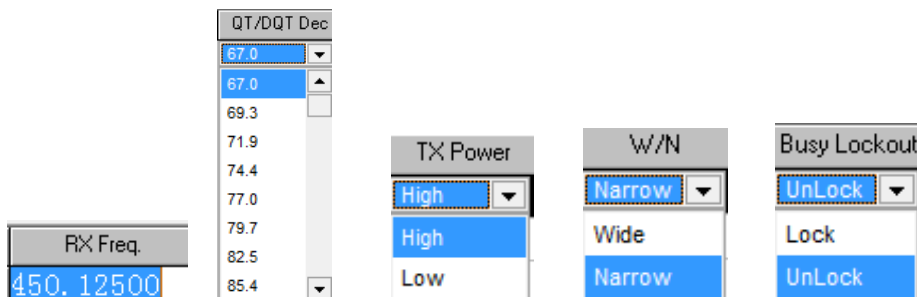
You can modify the options simply by click on them. Make sure you are clicking on the row for the channel you wish to change. Some settings will let you type in the values that you want, and others will need you to select and option from a drop-down menu.

RX Freq. = Receive Frequency / TX Freq. = Transmit Frequency

QT/DQT Dec and QT/DQT Enc = Encode your communication so other people on the same frequency cannot hear what is being spoken unless they know the right value (Default Off).

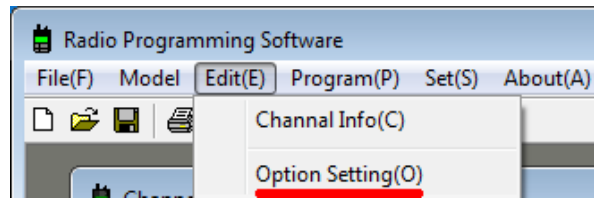
W/N = Wideband and Narrowband. Keep on Narrowband except for special circumstances.

TX Power = High gives you more range but shorter battery life, Low gives you shorter range, but better battery life.

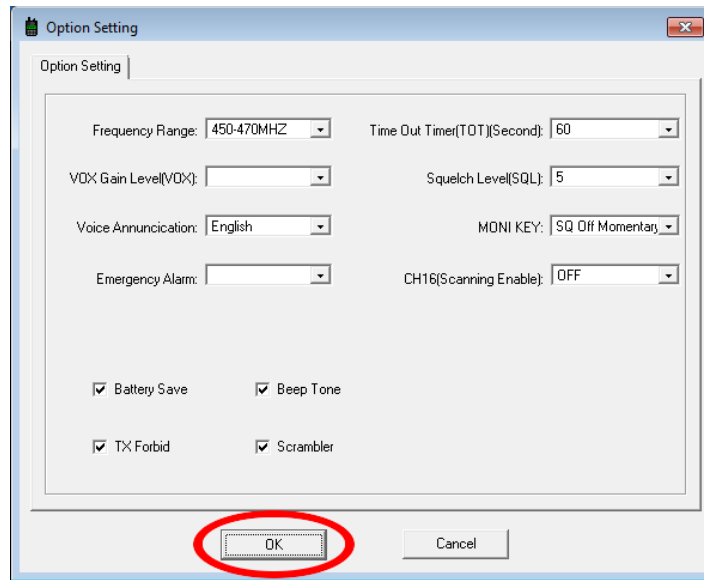


## Changing Optional Settings

The settings of the radio that are not channel settings can be found in a separate menu. To do so, click on **Edit(E)** and then **Option Setting(O)**.

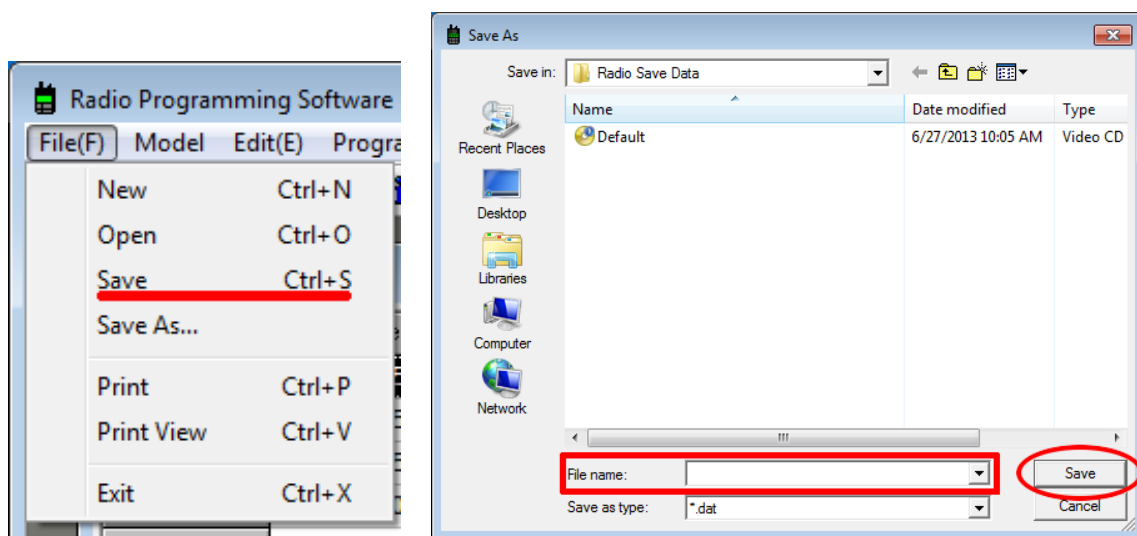


The **Option Setting** window should appear. Adjust the settings to your preference and then click on **OK** to close the window. If you wish to undo any changes to this window, simply click on **Cancel**.



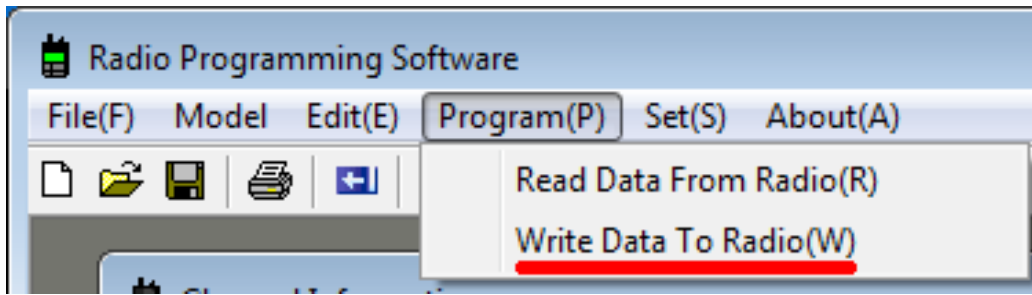
## Creating a Backup of Your Custom Settings

Once all of your settings are set, you can save them to make the process much faster, if you need to program other radios with the same settings, or just to keep as a backup. To do so, click on **File(F)** in the menu bar and then **Save As...** A new window should appear. Choose a location you will remember, name it something identifiable, and click **Save**.

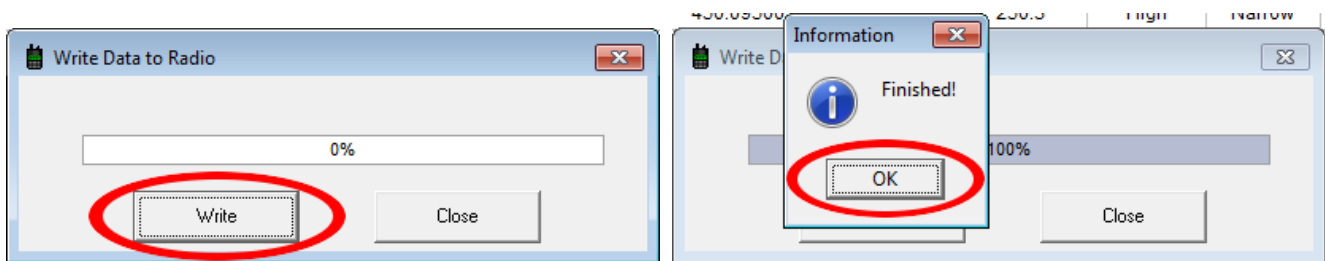


## Writing the New Settings to Your Radio

Although you may have saved your custom settings to your computer, they do not automatically transfer to your radio. You will need to write the data to your radio for it to take effect. You can do this by clicking **Program(P)** in the menu bar and then **Write Data To Radio(W)**.

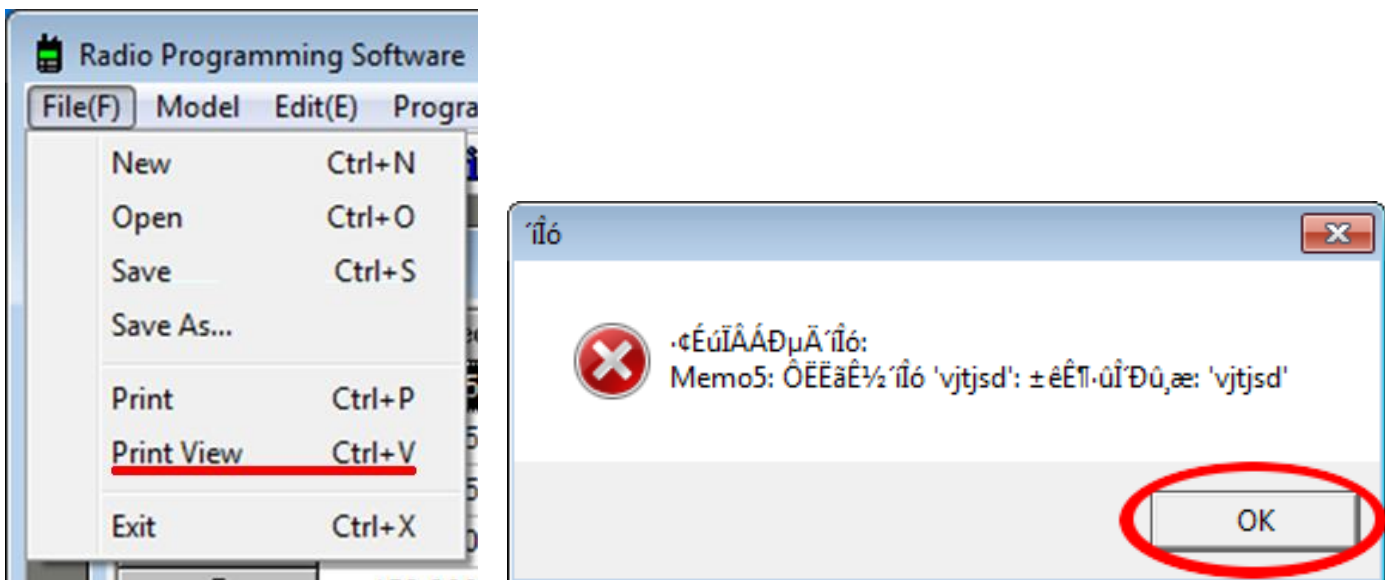


A new window should appear. Make sure your radio is plugged in, turned on, and your COM port settings are correct. Click **Write** and wait for the **Finished** message to appear. Do not unplug the radio or close the window until the message appears. You can close the window by clicking **OK**.



## Printing Your Channel Settings

If you wish to make a physical copy of your channel settings, the software does include a print function. To use this function, click on **File(F)** in the menu bar, and then **Print View**. An error message may appear, but it should not cause any issues. Simply click **OK** on the message to close it.



A preview of the page you are about to print should appear. If everything looks correct, you can click on the printer icon in the top left of the screen to open the printer select screen.

UA-500

Frequency 450.00000M-470.00000M      6/27/2013

NO	RX Freq.	TX Freq.	QT/DQT Dec	QT/DQT Enc	TX Power	W/N	Scan Add	Busy Lockout
1	450.12500	450.12500	67.0	67.0	High	Narrow	Add	UnLock
2	460.12500	460.12500	127.3	127.3	High	Narrow	Add	UnLock
3	469.98750	469.98750	250.3	250.3	High	Narrow	Add	UnLock
4	455.05000	455.05000	OFF	OFF	High	Narrow	Add	UnLock
5	459.90000	459.90000	OFF	OFF	High	Narrow	Add	UnLock
6	459.80000	459.80000	OFF	OFF	High	Narrow	Add	UnLock
7	459.70000	459.70000	OFF	OFF	High	Narrow	Add	UnLock
8	459.60000	459.60000	OFF	OFF	High	Narrow	Add	UnLock
9	459.50000	459.50000	OFF	OFF	High	Narrow	Add	UnLock
10	459.40000	459.40000	OFF	OFF	High	Narrow	Add	UnLock
11	459.30000	459.30000	OFF	OFF	High	Narrow	Add	UnLock
12	459.20000	459.20000	100.0	100.0	High	Narrow	Add	UnLock
13	450.00000	450.00000	OFF	OFF	High	Narrow	Add	UnLock
14	469.95000	469.95000	127.3	127.3	High	Narrow	Add	UnLock
15	459.98750	459.98750	67.0	67.0	High	Narrow	Add	UnLock
16	460.45000	460.45000	OFF	OFF	High	Narrow	Add	UnLock

Once the printer select screen opens you can select your printer and click on **OK**. If your printer select screen is unreadable, it should still print fine, but you may have some difficulty figuring out what is what. The picture below outlines what is the printer select and the OK button, so you can find them if the text is unreadable.

Printer selection dialog box showing:

- Printer name: HP LaserJet P3005 PCL6 (highlighted with a red box)
- Buttons: ÉêÐÔ(P), Êá³òÔÁÏÄ¼b(L)
- Options:
  - È«²ç (selected)
  - ±¼Ó³
  - Ò³
  - ×Ô¶¹·Ò³(T) (checked)
  - Swap paper size (unchecked)
- Buttons: É·¶ (highlighted with a red box), ÈíÛ